

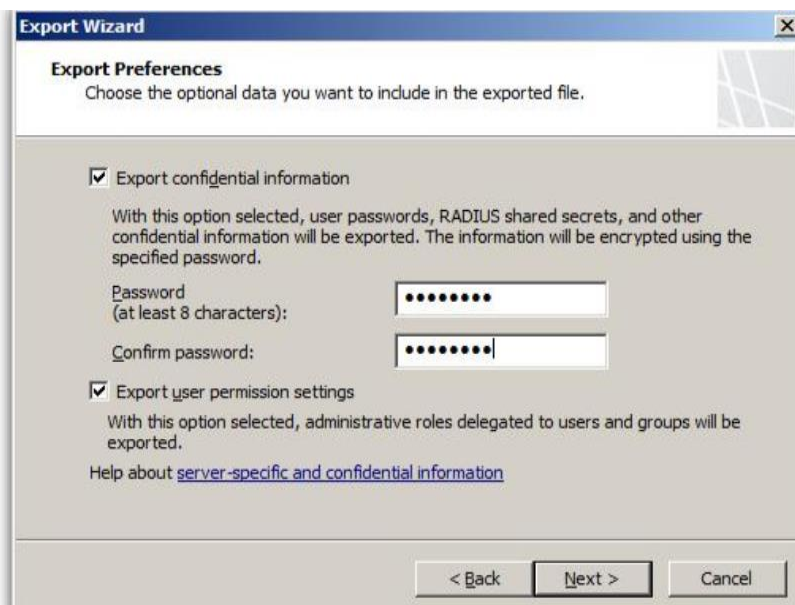
Microsoft Forefront Threat Management Gateway devices

You can get the configuration from your Microsoft ForeFront device by using the Management console.

1. Click on the ForeFront TMG tab
2. Click one of the options to export the configuration, denoted by a blue arrow, either on the toolbar on the top, or in the "tasks" option on the right hand side of the screen



3. Follow the instructions on the wizard
4. When it comes to the "Export Preferences" screen shown below, tick both boxes and enter a password



Follow the rest of the instructions and the configuration will be saved ready for use with Nipper Studio.